

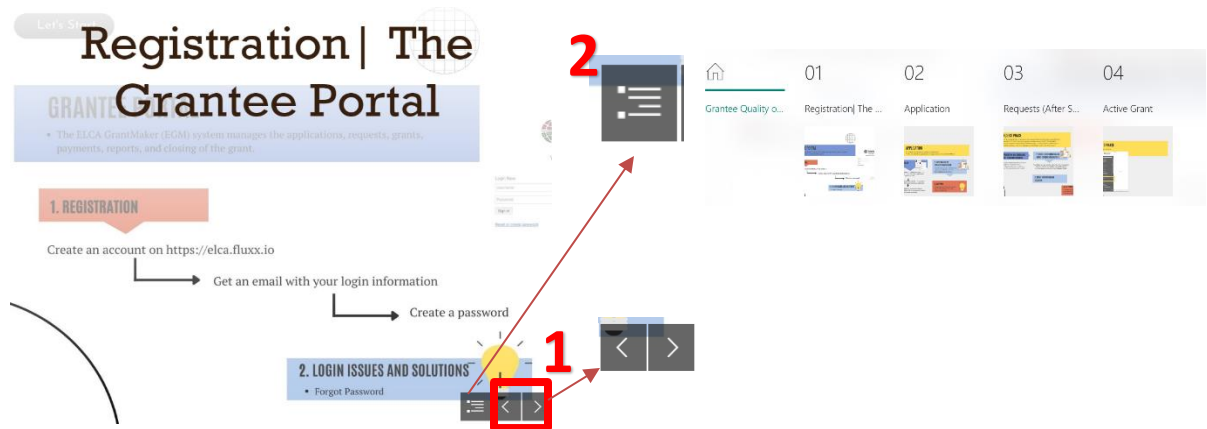


# Managing the Grantee Tool

## Navigate to the different sections

The Grantee Tool has 5 sections: Home, (01) Registration, (02) Application, (03) Requests (Steps after Submitted Application), (04) Active Grant.

There are 2 ways to navigate the sections of the grantee tool. Enter your login information. (1) Using the arrows to move through the different sections in order. (2) Using the index icon to jump to any of the sections.



## Multimedia Resources

There are images, videos, links, and text boxes on the Grantee Tool. Below are the different interactive usages.

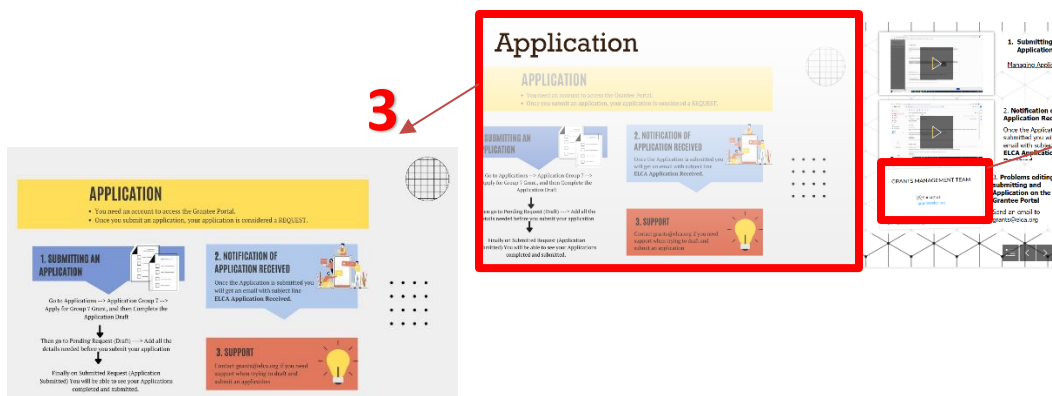
## Images

(3) You can click on each section image to make it bigger. (4) One click can make each sub-section picture bigger as well.

GRANTS MANAGEMENT TEAM

Contact us  
[grants@elca.org](mailto:grants@elca.org)

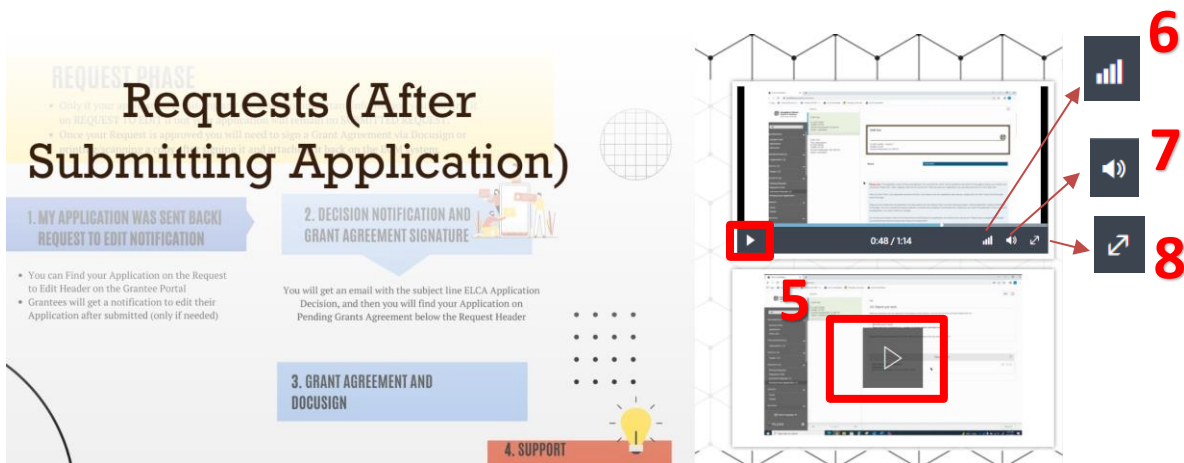
Evangelical Lutheran Church in America  
God's work. Our hands.





## Videos

(5) Click on any video to PLAY it. (6) Click on this icon if you want to change the QUALITY OF THE VIDEO. (7) Click on the volume icon if you want to change the VOLUME of the video. (8) Click on this icon if you want to watch the video on FULL SCREEN.



## Links and Text Box

(9) Each Text Box has a title and/or brief description of the video content. Please follow the number of the text boxes as steps to complete all your different actions requested. (10) You can find links inside these text boxes to make your access to external resources easier. Please, click on this links to get access to these resources.

