



# *What's Lutheran Social Ministry Got To Do With The Reformation?*

Rev. David deFreese  
*Vice President of Church Relations*  
*Mosaic*

Ms. Charlotte Haberaecker  
*President & CEO*  
*Lutheran Services in America*

Rev. James V. Bosse  
*Vice President*  
*Graceworks Lutheran Services*

Mr. Ted W. Goins, Jr.  
*President & CEO*  
*Lutheran Services Carolinas*

Martin Luther's  
Life-Changing Insight on  
**Grace**



1517

Theology of the Cross

# The Impact of Grace: the Gospel word

## Saved by Grace through Faith for Works!

- Gravity and Grace: Grace grounds us
- Living forgiven:

“Because all have sinned and fallen short ...”

Freedom **from** being “curved in on one’s self”  
Freedom **for** loving and serving our neighbor.

Spiritual unity lived out:

“There is no longer Jew or Greek, slave nor free, male or female, for all of you are one in Christ Jesus.”

– Galatians 3:28

No more religious elite ...  
end of monasteries and convents  
Growth of the Deaconess Community



“Social ministry is integral for and by the Church”

# How does Lutheran social ministry continue to respond to God's grace?

- Social ministry is the response of the church to the brokenness of the world
- Lutheran identity
  - Shared history
  - Established relationship with church bodies
  - Shared biblical and theological themes
  - Shaped by distinctive beliefs and convictions
  - Expresses Church's gospel witness in the world



# How does an Lutheran social ministry organization claim expression of church?

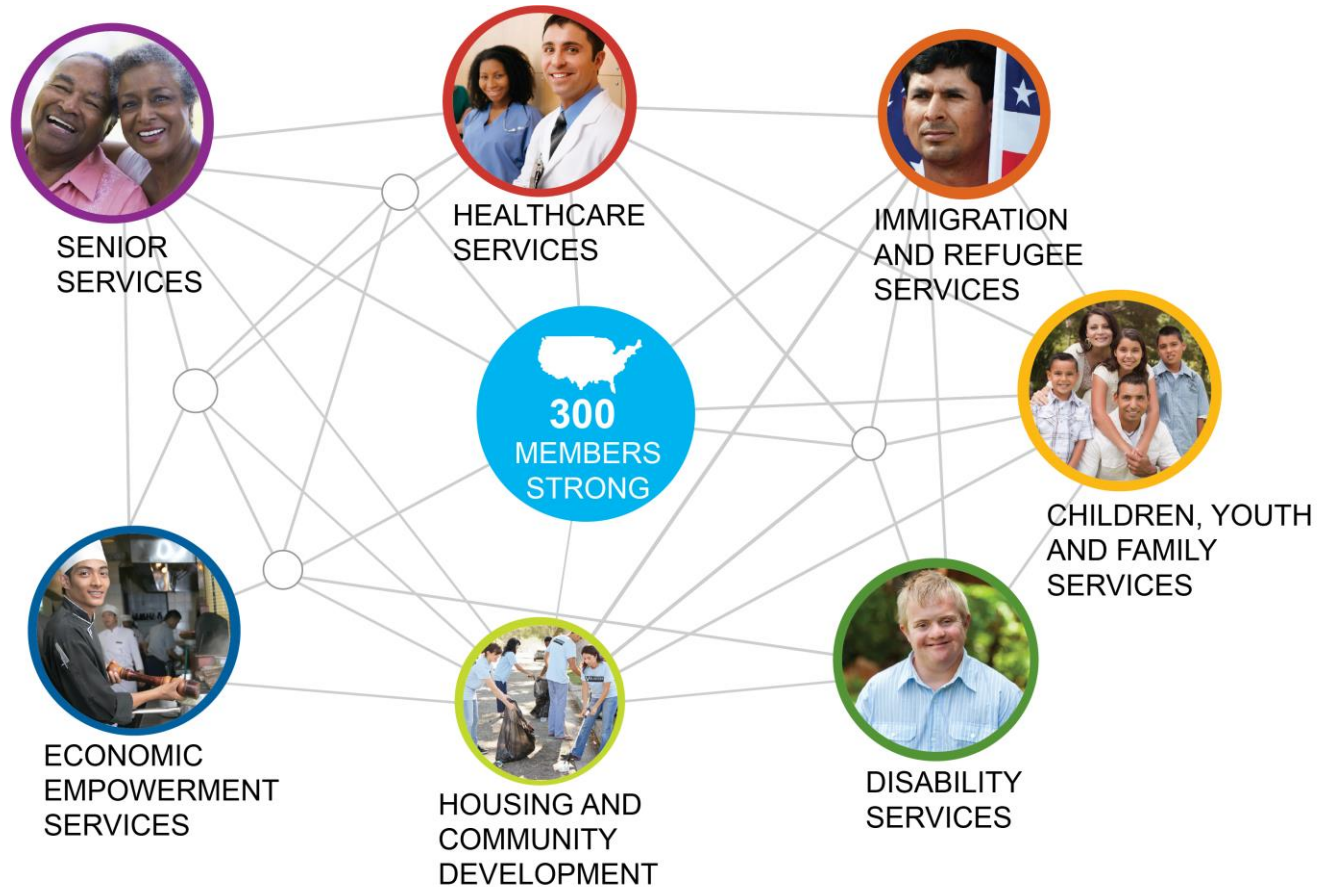
- Identity and Mission
  - Why the organization exists
- Values and Leadership
  - What is important to the organization
- Practice and Witness
  - How organizations express the gospel of Jesus Christ through care and service

# How do Lutheran social ministry organizations witness the good news of God's gracious love?

- They claim the identity of church through their mission, values, leadership, practice and witness.
- They deliver faith-based, values-driven care and services as an expression of the church.
- They provide opportunities for people of faith to participate in the church as an integral part of its witness in and restoration of the world.



# LSA Network Serves 1 in 50 People in the U.S. Each Year



# The Future of Lutheran Social Ministry

LSA envisions a network of connected, strong and thriving Lutheran social ministries that transform the lives of people and communities.

# JOIN US!

Lutheran Services in America, Incorporated

Charlotte Haberaecker

[Chaberaecker@lutheranservices.org](mailto:Chaberaecker@lutheranservices.org)

202-499-5821

[www.lutheranservices.org](http://www.lutheranservices.org)



[LutheranServices](#)



[LutheranSvcs](#)