

What's on ELCA World Hunger's plate?

How to give • Mail gifts to ELCA Gift Processing Center, P.O. Box 1809, Merrifield, VA 22116-8009. • Donate online at www.ELCA.org/hunger/donate.

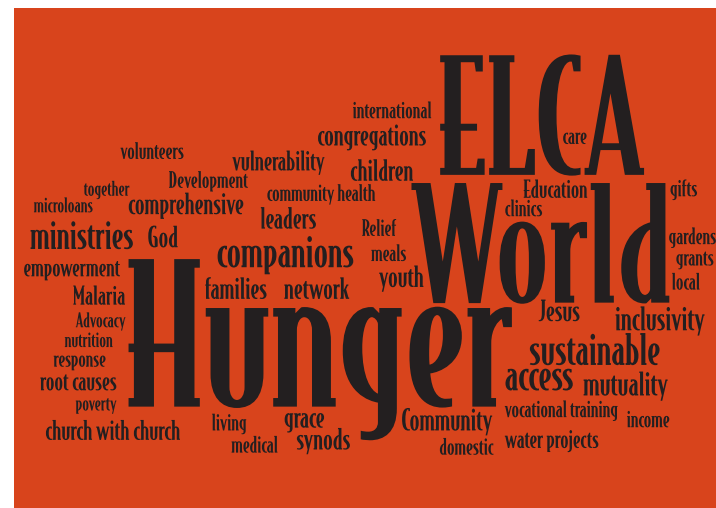


ELCA World Hunger
 Evangelical Lutheran Church in America
 God's work. Our hands.

TABLE PRAYER

Be present at our table, Lord;
 Be here and everywhere adored;
 From Thine all-bounteous hand our food
 May we receive with gratitude. Amen.

Cennick, Moravian Book of Worship



HUNGER QUIZ

- Food insecurity is identified when which of the following conditions are met?
 - A family is worried about whether food will run out before they get money to buy more.
 - The food bought didn't last, and they don't have money to get more.
 - They cannot afford to eat balanced meals.
 - All of the above.
- True or False: The United States uses 50 percent of its international food aid budget on shipping costs alone.
- In 2008 what percentage of the world's population got its drinking water from a piped connection in the user's dwelling, plot or yard?
 - 40 percent
 - 57 percent
 - 64 percent
 - 80 percent

2. True 3. b) 57 percent
 Key 1. d) All of the above

Responding to the immediate and basic needs of those who are hungry and face poverty.

Digging into the root causes of hunger and poverty to learn how our lives can create change around the world and close to home.

Speaking with and on behalf of those living with hunger and poverty.

Working together to find sustainable solutions to break the cycle of hunger and poverty.

Meals, community gardens and agricultural projects help nourish families and their communities.

Children and adults benefit from education, life skills and vocational training.

Grants and microloans are being provided to help break the cycle of hunger and poverty for good.

Clinics and community health programs provide health education and medical care for people living in poverty.

Water projects provide clean, safe water for drinking, washing and irrigating crops.

John 6:35: Jesus said to them, "I am the bread of life. Whoever comes to me will never be hungry, and whoever believes in me will never be thirsty."

WATER • FOOD • EDUCATION • INCOME • HEALTH

MEDICAL CARE | CLOTHING | SHELTER | FOOD ACCESS

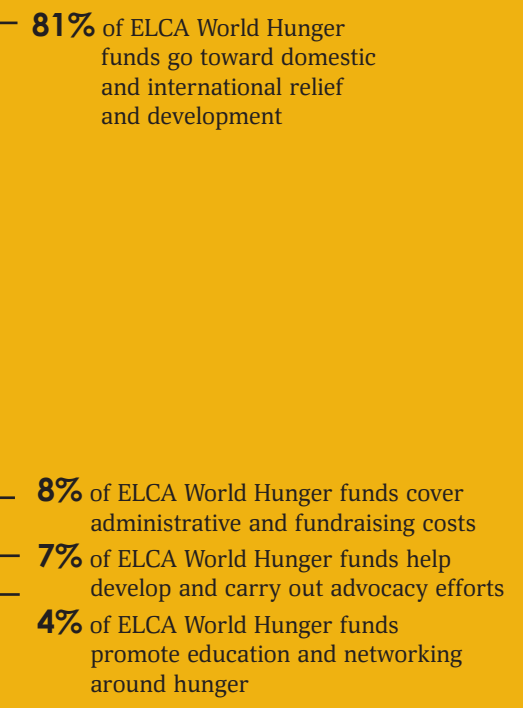
EDUCATION

ADVOCACY

DEVELOPMENT

REFLECTION QUESTIONS

- Why are all these tools important to the work of ELCA World Hunger?
- What can be done to address the issues of hunger and poverty in your community and around the world?



KENNETH'S STORY

Kenneth's story demonstrates the effectiveness of a jobs ministry that accompanies neighbors in communities in the United States. Kenneth had been through a lot in his life, including struggles with addiction and incarceration. Through the jobs program at Cross Lutheran Church, he was able to develop his strengths and find the support he needed to find employment – and so much more.

View Kenneth's story at www.ELCA.org/hunger/videos.



THE LINGSON FAMILY STORY

The Lingson Family Story shows a community that is developing by growing together in relationship with one another. A livestock project of the Evangelical Lutheran Church in Malawi was undertaken with the community as a whole, and over time this project continues to grow and benefit all who are involved.

View The Lingson Family Story at www.ELCA.org/hunger/video.

Digging in: A Guide to Service Learning

Service Learning: a process to create service activities with deeper and lasting meaning

STEP
1

PREPARATION

Listen Deeply • Build Community • Plan Ahead

Listen and Learn

- Identify priorities, needs, concerns and opportunities by listening to the community where service will take place
- Meet with community partners
- Choose a service activity
- We will listen to and learn from our community by: _____

Build Community

- Identify gifts and talents within the group
- Share expectations
- Create learning goals
- What we hope to learn or accomplish is: _____
- The skills we hope to develop are: _____

Plan Ahead

- Make necessary preparations for transportation, supplies, scheduling, etc.

STEP
2

ACTION

Engage in Service • With and Among • In Jesus' Name

Engage in Service

- Purposeful prayer
- Become involved and empowered
- Remain flexible
- If things don't go according to plan / If expectations are not met we will: _____

- We will stay grounded in our learning goals and purpose by: _____

- We will make sure everyone finds a meaningful role and is included by: _____

- We will involve the congregation by: _____

- How will we seek God's presence during the experience? How will we identify how God is working? _____

STEP
3

REFLECTION

Discover Meaning • Go Deeper • Beyond Volunteering

Discover Meaning

- Make time for personal and group reflection
- Consider how and when we reflect
- Incorporate Scripture
- Consider how and when we will debrief: _____

Go Deeper

- Discuss how goals and expectations were met or changed by the experience
- How this experience might shape our future attitudes or behaviors: _____

THE CYCLE OF SERVICE LEARNING



Details for each step are provided in the "Digging in: A Leader's Guide to Service Learning"

STEP
4

CELEBRATION

Worship and Celebrate • Tell the Story • Now What?

Worship and Celebrate

- Incorporate Scripture, prayer and spiritual practices
- We will celebrate by: _____
- Now what? _____

Tell the Story

- Share the experience with others
- Thank congregation, supporters and service partners
- We will share our experience by: _____
- Now what? _____

RESOURCES AND LINKS

ELCA World Hunger. Resources include Digging in: A Leader's Guide to Service Learning, Hunger Education Toolkits, video series, Taking Root multi-age curriculum, resource packets, and more. Available from www.ELCA.org/hunger/resources, hunger@elca.org, or 1-800-638-3522, ext. 2580.

ELCA Good Gifts Catalog. Find over 50 gifts that grow the church, fight hunger and transform lives. View online at www.ELCA.org/goodgifts.

Service And Learning Leadership Team Project. Training materials, resources, videos and links to support the service learning process. Visit www.sallt.org.

CREDITS

Developed in partnership with authors:
Mark J. Jackson & David Ellingson



The service learning model was developed by the Service And Learning Leadership Team (SALLT) Project at Trinity Lutheran College and is adapted with permission.



ELCA World Hunger
Evangelical Lutheran Church in America
God's work. Our hands.