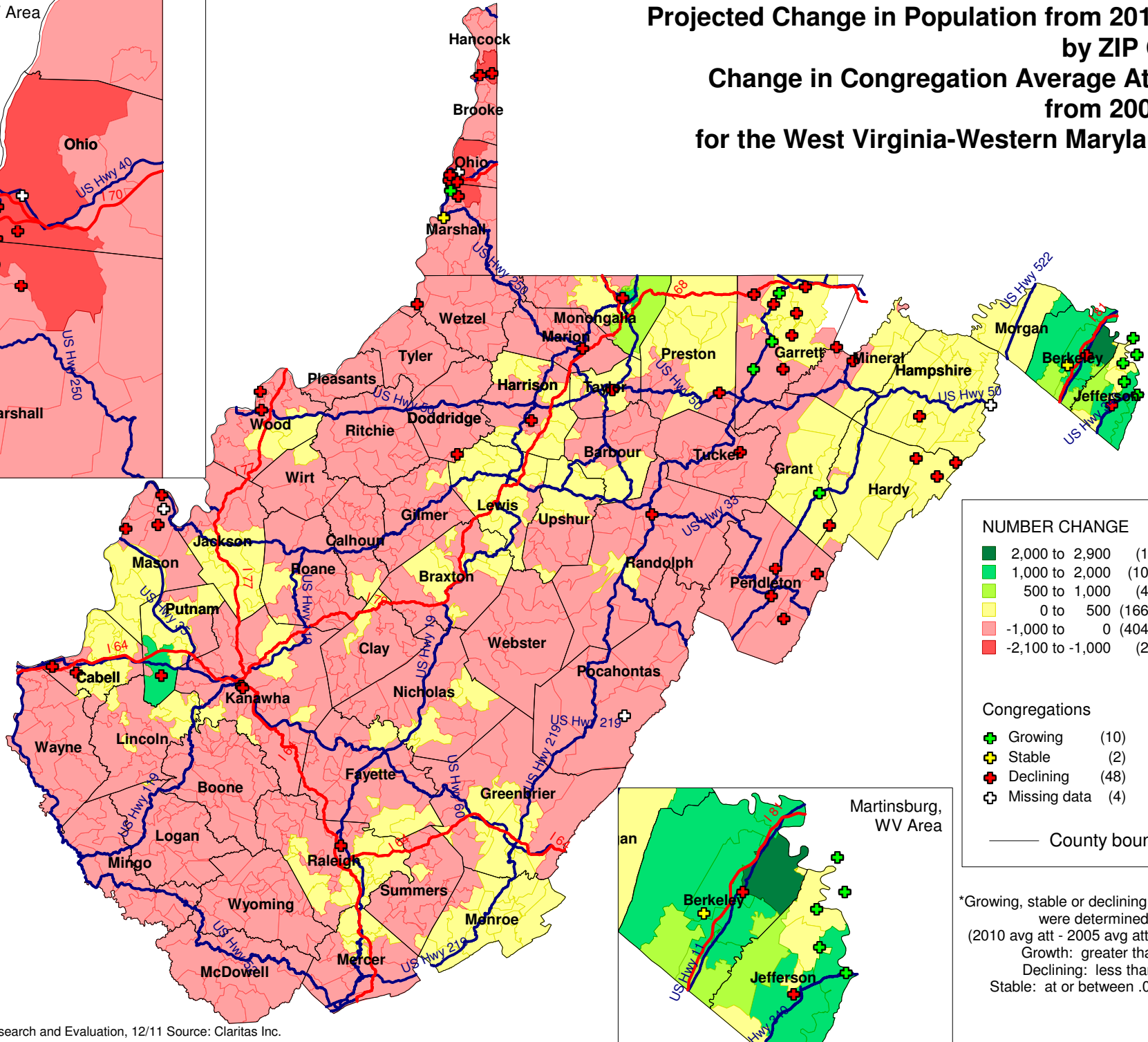
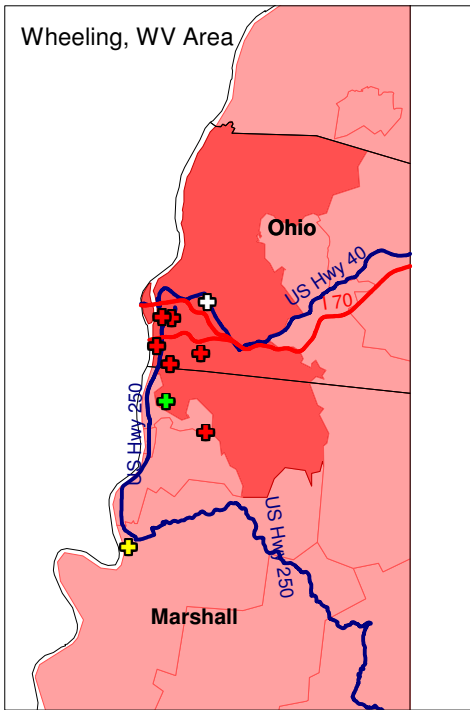


Projected Change in Population from 2010 to 2015 by ZIP Code and Change in Congregation Average Attendance from 2005 to 2010 for the West Virginia-Western Maryland Synod



NUMBER CHANGE

- 2,000 to 2,900 (1)
- 1,000 to 2,000 (10)
- 500 to 1,000 (4)
- 0 to 500 (166)
- 1,000 to 0 (404)
- 2,100 to -1,000 (2)

Congregations

- Growing (10)
- Stable (2)
- Declining (48)
- Missing data (4)

— County boundary

*Growing, stable or declining congregations were determined by $(2010 \text{ avg att} - 2005 \text{ avg att}) / 2005 \text{ avg att}$
 Growth: greater than .05
 Declining: less than -.05
 Stable: at or between .05 and -.05

