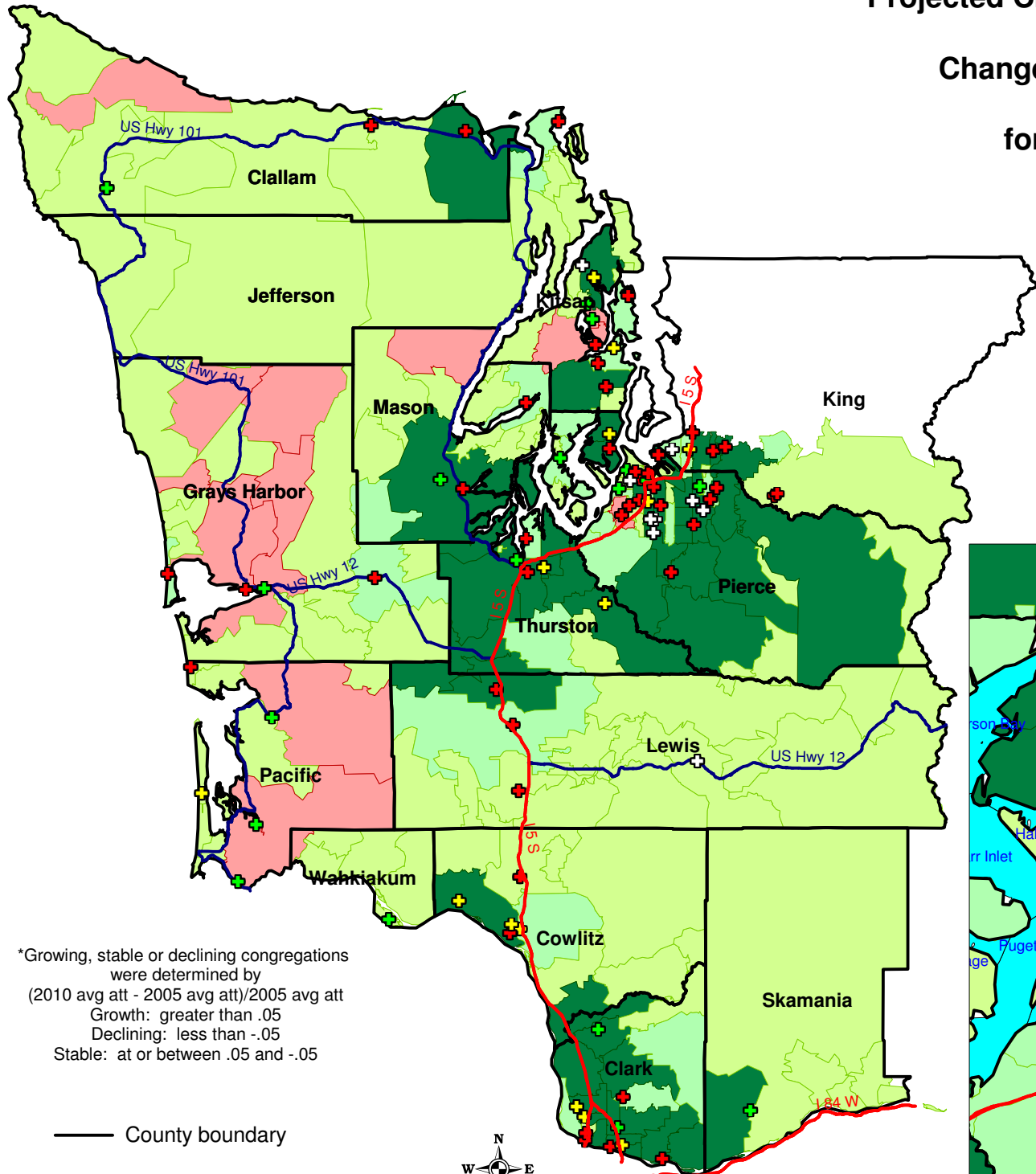
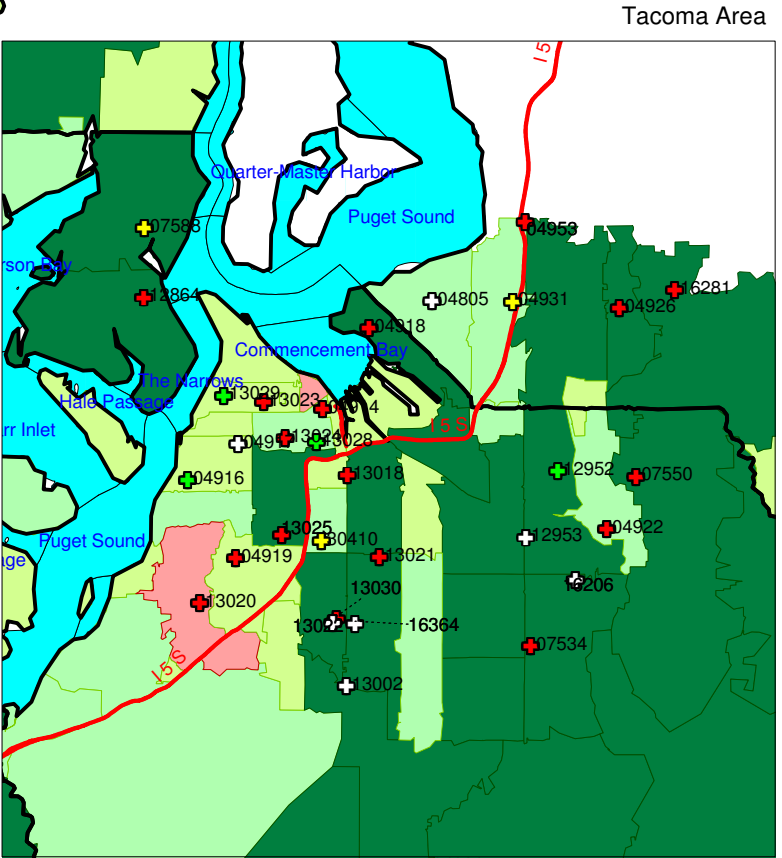


# Projected Change in Population from 2010 to 2015 by ZIP Codes and Change in Congregation Average Attendance from 2005 to 2010 for the Southwestern Washington Synod



NUMBER CHANGE		Congregations	
1,000 to 6,654	(52)	⊕ Growing	(18)
500 to 1,000	(26)	⊕ Stable	(14)
0 to 500	(102)	⊖ Declining	(45)
-320 to 0	(16)	⊕ Missing data	(9)



\*Growing, stable or declining congregations were determined by  
 $(2010 \text{ avg att} - 2005 \text{ avg att}) / 2005 \text{ avg att}$   
 Growth: greater than .05  
 Declining: less than -.05  
 Stable: at or between .05 and -.05

— County boundary

