

In 2015, members of 9,300 congregations in the United States and Caribbean gave **\$1.75 billion** in regular offerings to support ELCA ministries in their local communities and worldwide.

When members give through their **congregations**, a percentage of that money is then shared with the local **synod** and the national **churchwide organization**.

Of the \$1.75 billion total, the churchwide organization received **\$47.1 million**, or **2.7 percent** of the total regular offerings to ELCA congregations in 2015. This represents the largest portion of the ELCA churchwide organization's current operating budget of \$69 million, which includes additional income from investments, bequests and trusts, grants, and certain designated offerings.\* This unrestricted giving, called Mission Support, gives us both the foundation and the fuel to do God's work in the world.

\*Designated offerings included in the operating budget are your gifts to ELCA Vision for Mission and ELCA Global Church Sponsorship. ELCA World Hunger, the ELCA Malaria Campaign and Lutheran Disaster Response operate their own annual budgets exclusively from ELCA members' designated offerings each year.

## In 2015, your churchwide offering made it possible to:

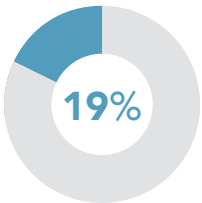
### Grow the ELCA in the United States



**Plant and support**  
372 new congregations.

- **Enable congregations to renew their ministries** and reach out to their surrounding communities.
- **Work together** with our African Descent, American Indian and Alaska Native, Arab and Middle Eastern, Asian and Pacific Islander, and Latino/Latina members to develop networks and resources for ministry.
- **Develop and share resources** for faith, discipleship, prayer and worship.

### Grow the Lutheran church around the world



**Send 228 missionaries** in more than 40 countries, and more than 73 Young Adults in Global Mission in nine country programs.

- **As a member of The Lutheran World Federation, we're in communion with 144 member churches** and directly connected to 85 companion churches in other countries.
- **Accompany new Lutheran churches**, expand ministries, and train leaders and evangelists.

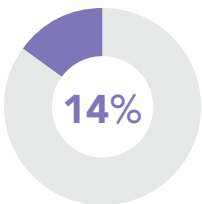
### Provide coordination and support for churchwide ministries



**Maintain constituent database**, including 1.1 million records of rostered and lay leaders, members, donors and congregations.

- **Preserve and maintain archives and historic records** of the ELCA and its predecessor bodies.
- **Provide office space, equipment and human resources** for staff and operations.
- **Process 150,000 gifts** to ELCA ministries.
- **Equip congregations and synods** with resources to assist in risk management and legal matters.

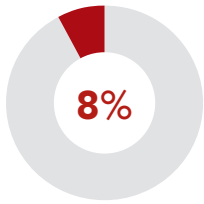
### Support and develop current and future leaders in the ELCA



**Recruit, prepare and implement a system** for the assignment of 9,500 rostered leaders.

- **Support the work** of eight ELCA seminaries and 26 colleges and universities.
- **Identify, connect and provide** ministry resources and opportunities for networking for lay leaders.
- **Offer events and leadership opportunities** for youth and young adults.

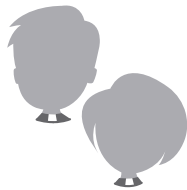
## Invest in **technology** and **communications**



**Design and maintain communications tools** to strengthen our Lutheran identity and grow awareness of our church and its mission and ministries.

- **Connect members with one another** through new technology and systems.

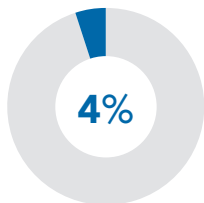
## Provide **governance** and **leadership**



**65**  
**Coordinate meetings and support** for 65 synodical bishops.

- **Organize lay and clergy leaders from across the church to serve** on the governance boards and committees that provide guidance and oversight for ELCA ministries.

## Address social issues and **work for justice**



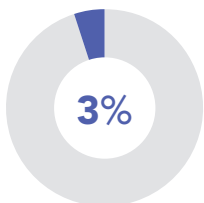
**1 in 50**

**Support** social ministry organizations, such as Lutheran Services in America, to impact the lives of **1 in 50** Americans.

- **Engage** in churchwide study and deliberation to create social statements and resources that address social, political, environmental and other public issues.
- **Equip** members and leaders to advocate with lawmakers in order to support policies that promote justice and peace.

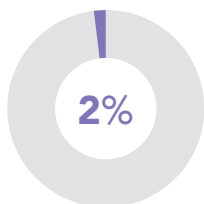
*Your designated gifts to ELCA World Hunger, Lutheran Disaster Response and the ELCA Malaria Campaign provide an additional \$30 million annually to address hunger, poverty and suffering in more than 65 countries around the world.*

## Grow and sustain financial resources



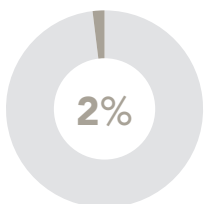
**Develop and promote** efforts related to stewardship education, financial literacy, mission interpretation and growth in giving to all church ministries.

## Engage in **research** and **strategic planning**



**Research and analyze trends that impact the ELCA and develop innovative strategies** to improve mission and ministry in the 21st century.

## Sustain **ecumenical** and **interfaith relationships**



**Facilitate dialogue and common action among communities of other faiths**, including the development of resources and communications for ELCA congregations.

- **Seek unity in faith and life** with all Lutherans and six full communion partners.